

i2i CASE STUDY

Bridging the Gap Between Research and Practice

Problem Statement

The UC Davis Center for Reducing Health Disparities (CRHD) wanted to translate their academic research to be more accessible to their community

Development

01

UC Davis CRHD staff shared a poster at the 2018 American Public Health Association Annual Meeting in San Diego

02

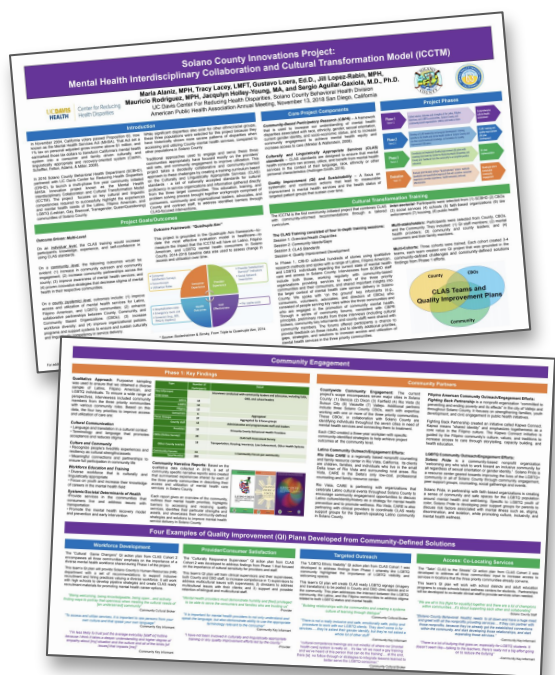
i2i met with CRHD staff to identify the most important aspects of the research project and then deconstructed the research poster

03

i2i used content from the conference poster and input from CRHD staff to create graphics that communicate the core principles of the research; then designed a 7-foot banner infographic in simple plain English that tells the story of the Solano County Innovations Project

Solano County Innovations Project

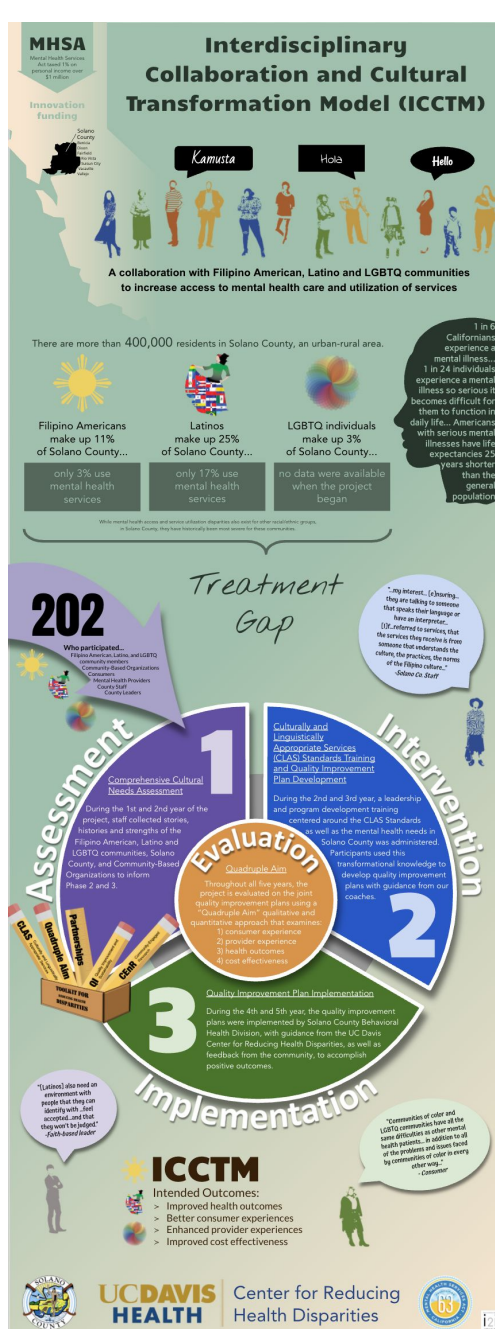
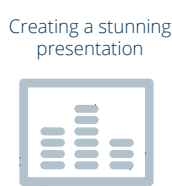
- 400,000 Solano residents
- 11% Filipino American
- 25% Latino
- 3% LGBTQ
- All 3 groups underutilized mental health services



Developing a compelling story



HOW WE WORK WITH OUR CLIENTS



Solution

i2i synthesized key parts of UC Davis' detailed research poster. The infographic combines facts about the community, a high level summary of the problem, the treatment applied by CRHD and the intended outcomes.

ICCTM

Intended Outcomes:

- > Improved health outcomes
- > Better consumer experiences
- > Enhanced provider experiences
- > Improved cost effectiveness



The new infographic helped CRHD staff to:

1. Clarify their core messages
2. Develop the "Toolkit for Reducing Health Disparities"
3. Translate academic research into simple plain English
4. Share their research with practioners and policy makers

In this era dominated by at-a-glance information, the creative work of Dr. Joel Rabin, stands out. He thoughtfully captures complex ideas and translates them into easy-to-understand graphic representations without trivializing its complexity.

Sergio Aguilar-Gaxiola, MD, PhD,
UC Davis Professor of Internal Medicine, Director of the Center for Reducing Health Disparities (CRHD), and Director of Clinical and Translational Sciences Center (CTSC)

Data + Design =

Want to learn more about how we can help your organization use data to design unique, insightful, data-driven reports? Visit our website or contact us!

www.inform2inspire.com
info@inform2inspire.com